

Biogeochemical Cycles

C-O

Phosphorus

H₂O

Nitrogen - nitrogen fixation

Oct 31-10:04 AM

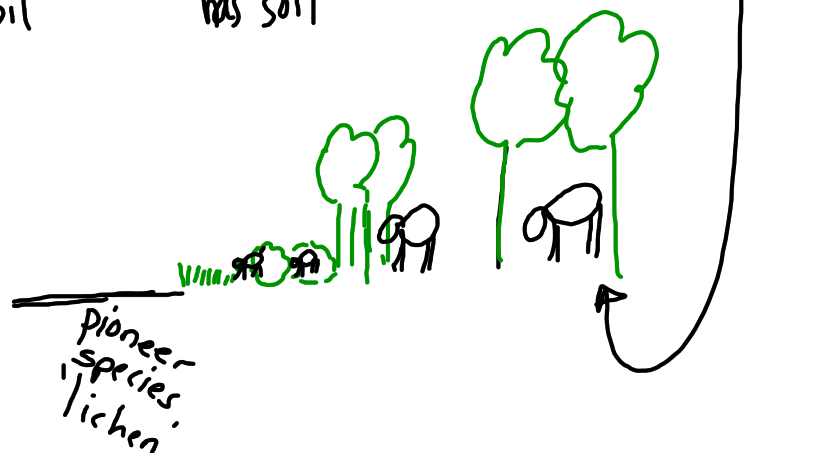
1^o Succession

NO soil

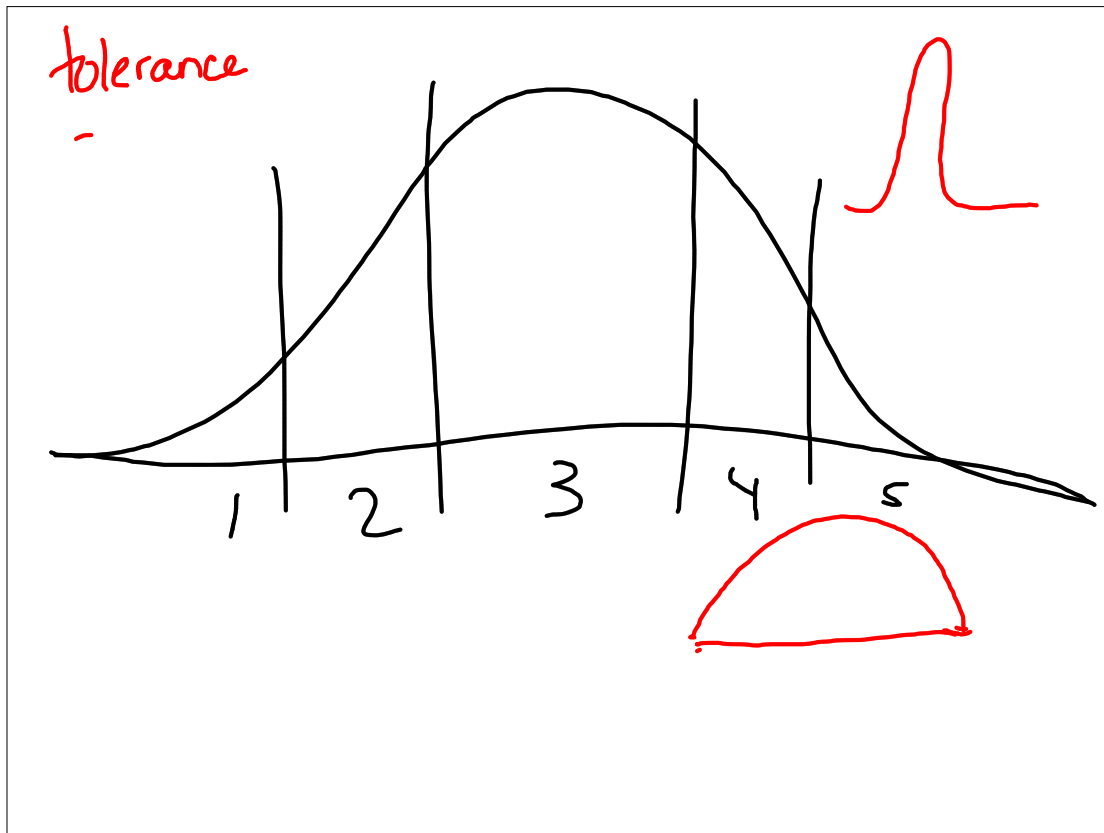
2^o Succession

has soil

Climax Community



Oct 31-11:07 AM



Oct 31-11:13 AM

Limiting factor - anything that restricts #, repro or distribution of an ~~organism~~ species

density dependent
depend on # of organisms present

prey
disease
competition } biotic

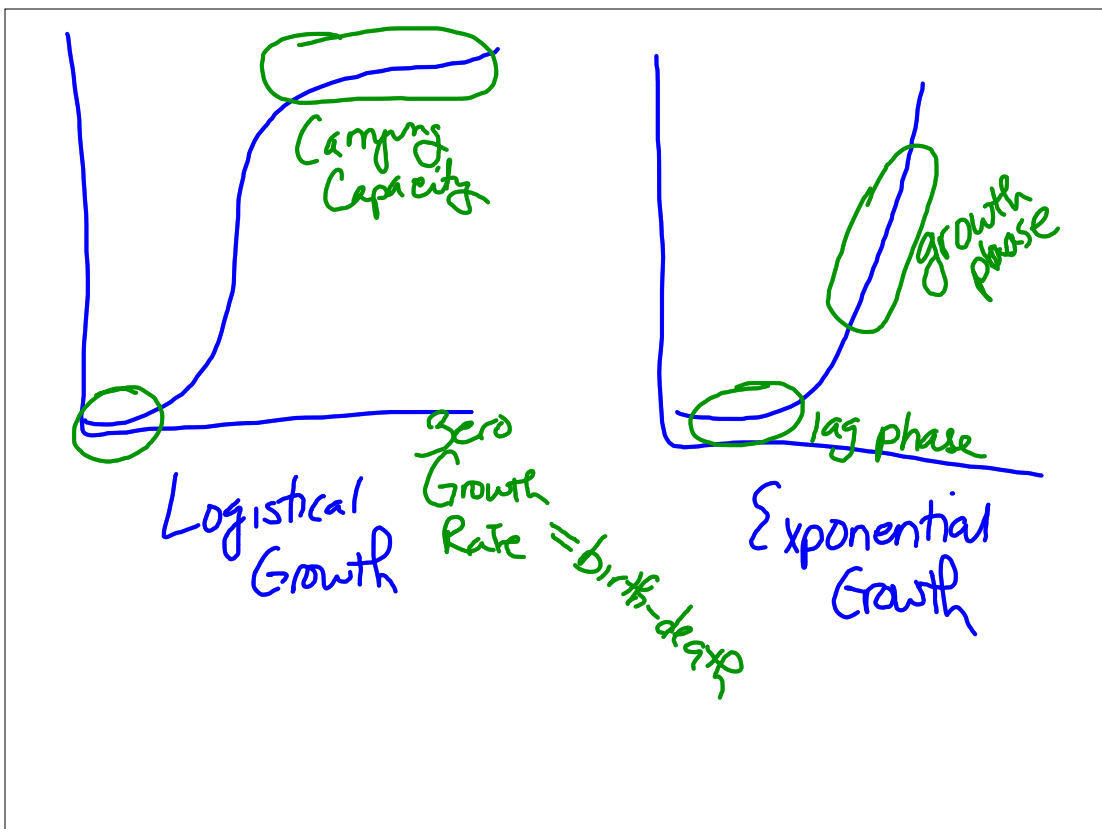
density independent
does NOT depend on organisms present

abiotic { weather
 { h₂O
 { sun
 { temp
 fire

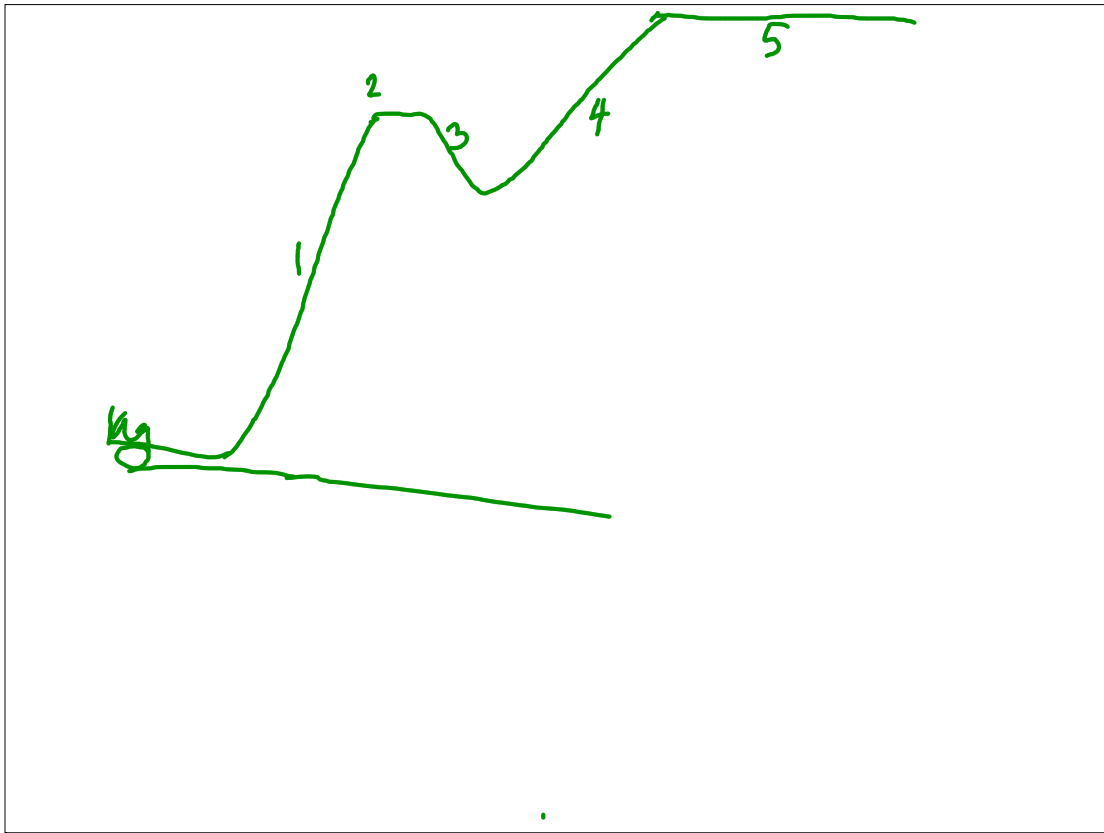
Oct 31-11:17 AM

<p>K strategy</p> <p>long life</p> <p>↓ # offspring</p> <p>do not adapt</p> <hr/> <p>elephant</p> <p>humans</p> <p>Big animals</p>	<p>R strategy</p> <p>Short life</p> <p>lots offspring</p> <p>adapt fast</p> <hr/> <p>mice</p> <p>bugs</p> <p>little animals</p>
--	---

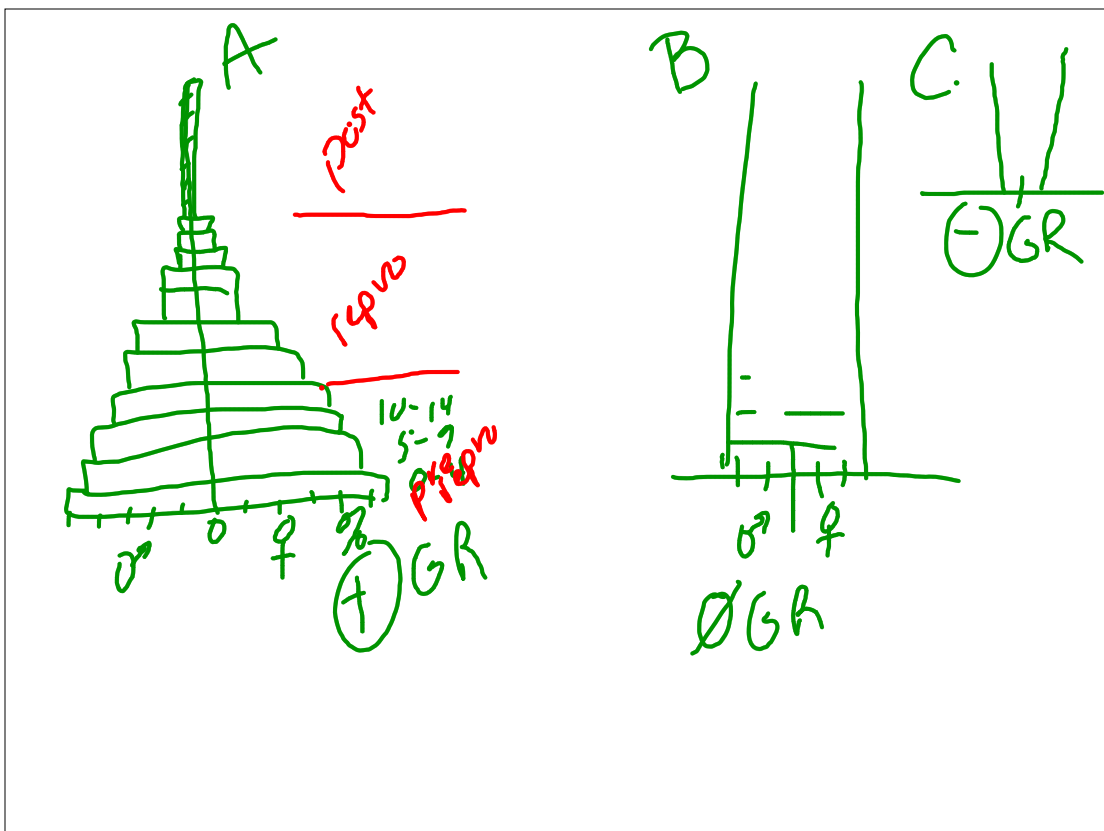
Oct 31-11:24 AM



Oct 31-11:27 AM



Oct 31-11:30 AM



Oct 31-11:33 AM

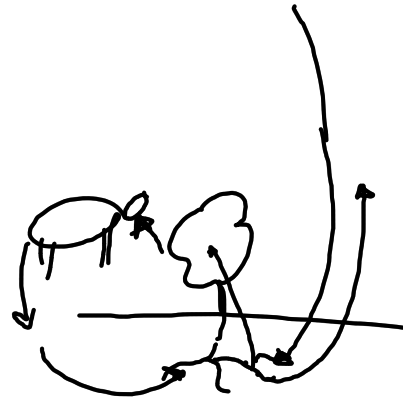
Biogeochemical Cycles

* C-O

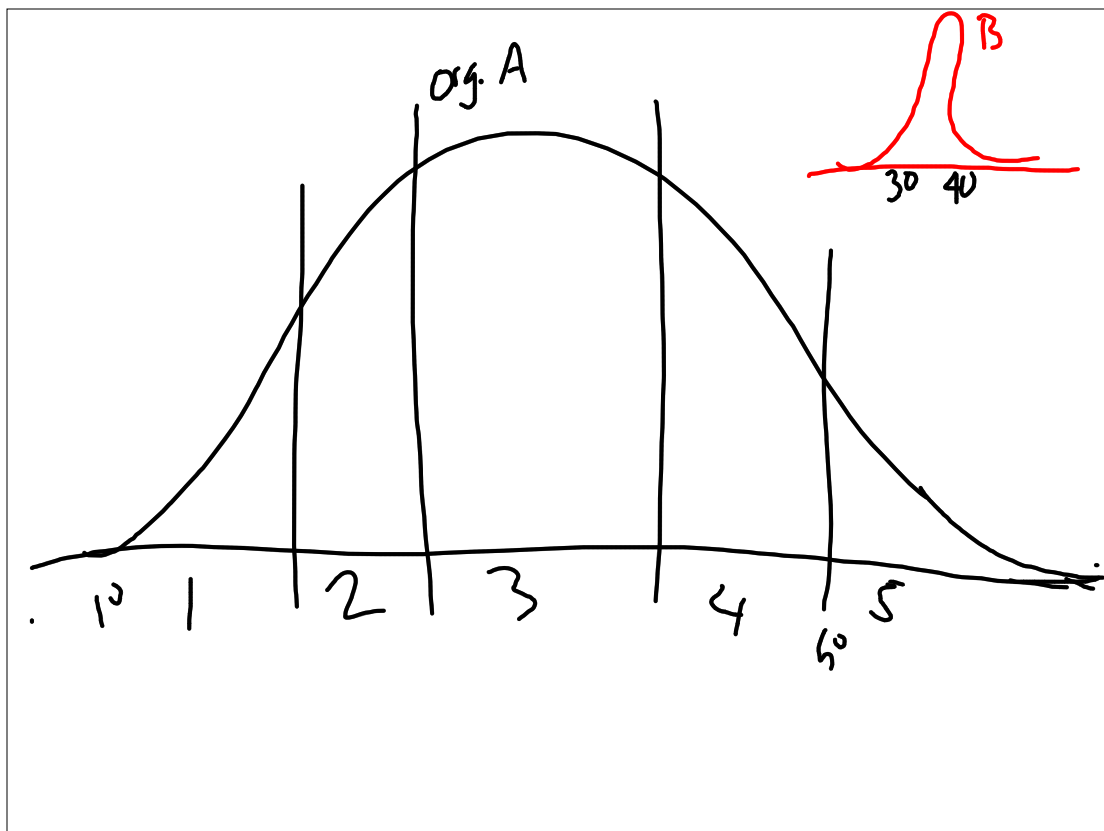
H₂O

* N - nitrogen fixation

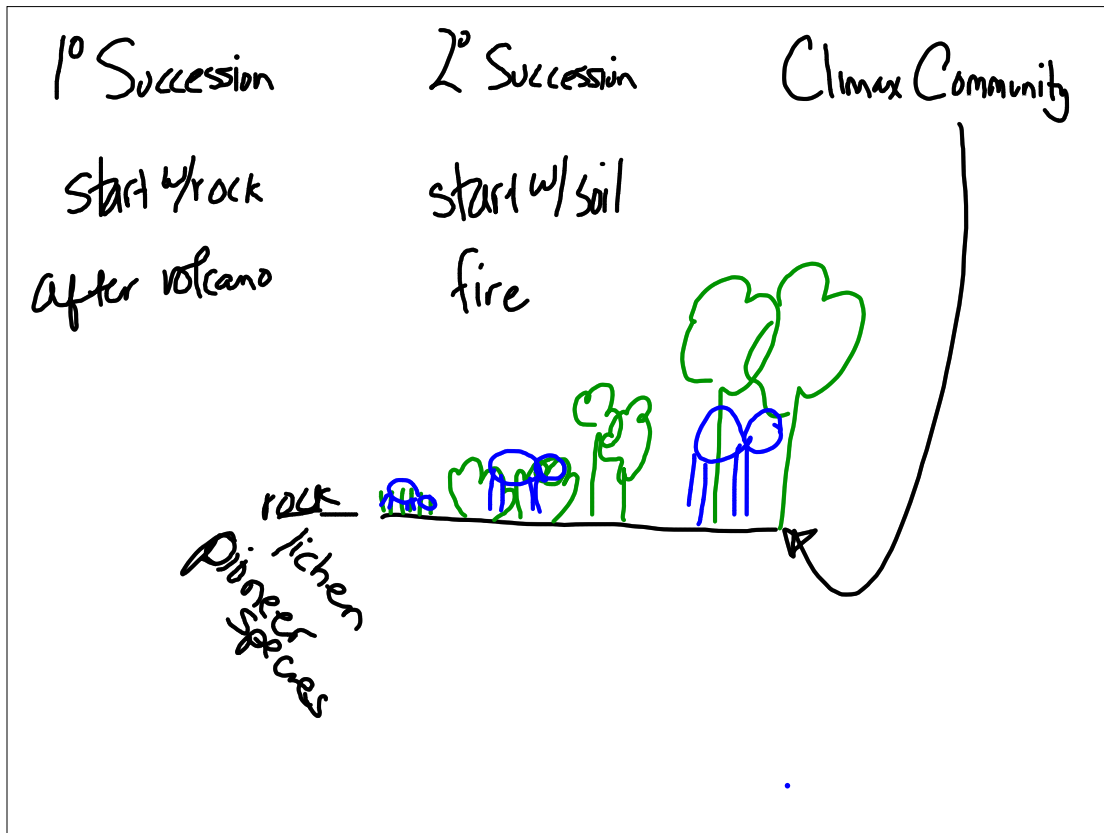
P



Oct 31-1:02 PM



Oct 31-1:05 PM



Oct 31-1:09 PM

Limiting Factor - limits #, movement, repro of a species
Anything that

density dependent
limits on pop size

disease
prey / H₂O
competition } biotic

density-independent

does not on pop #'s.

abiotic { weather - tornadoes
fire temp
drought
flood

Oct 31-1:14 PM

K strategy

Care for offspring
few offspring
live longer

mammals
humans

R strategy

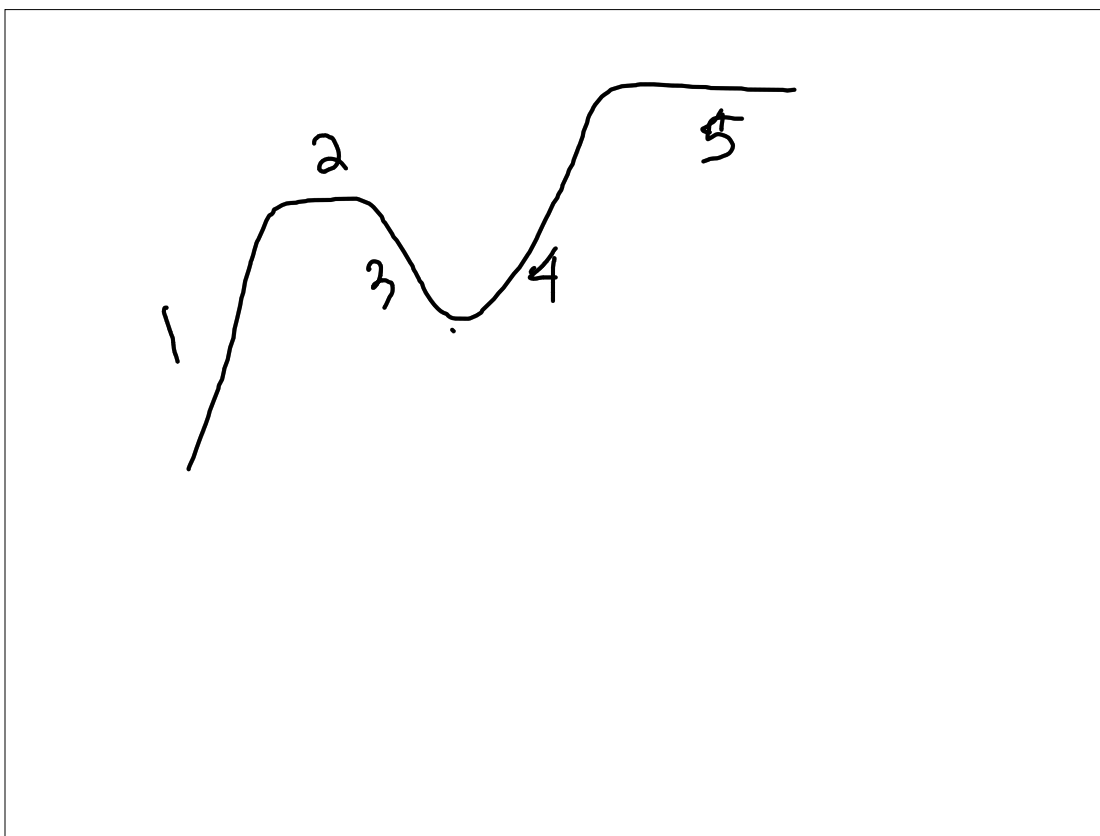
lots of offspring
do not care
Change/adapt easily
Short life span

bugs
fish
rodents

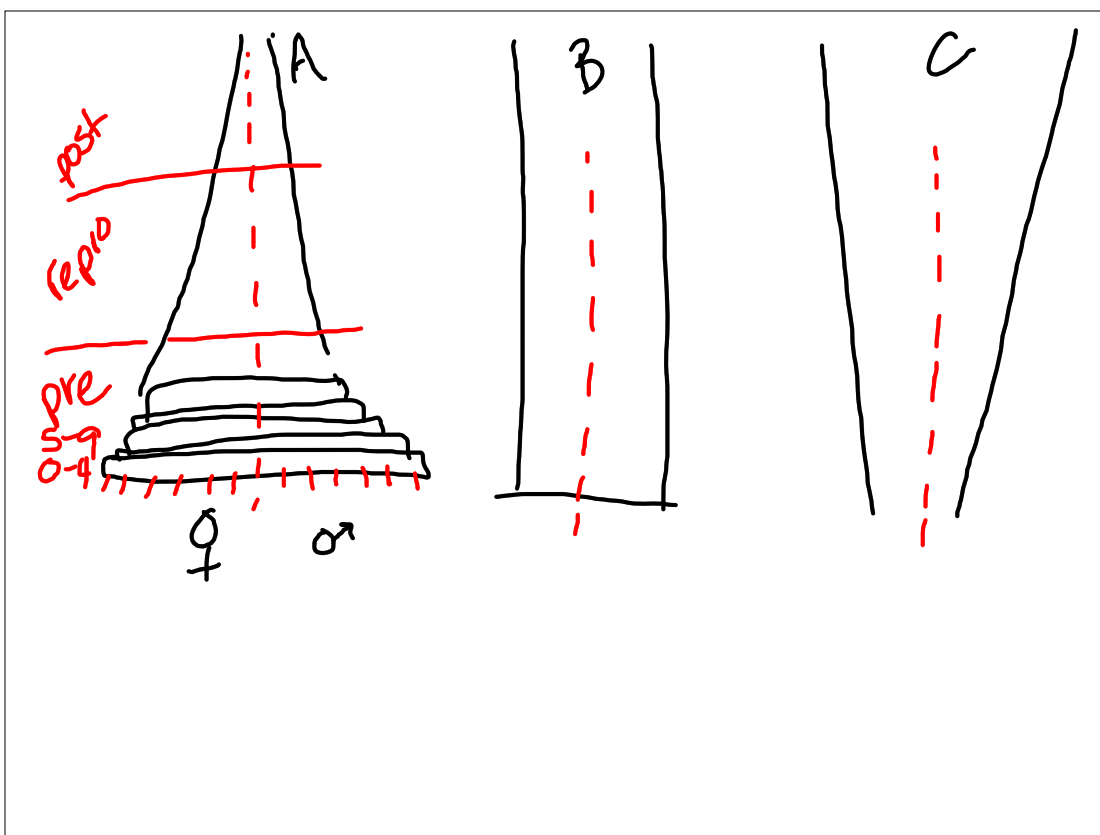
Oct 31-1:20 PM



Oct 31-1:23 PM



Oct 31-1:25 PM



Oct 31-1:27 PM

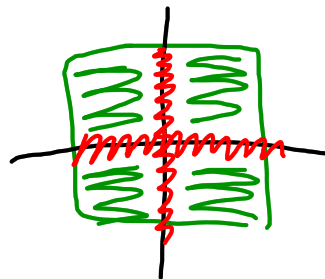
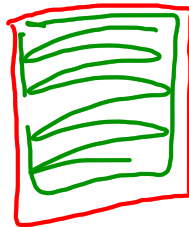
Genetic diversity

- different genes
w/in species

Species Diversity

bunch of different
species

Oct 31-1:31 PM



Oct 31-1:35 PM

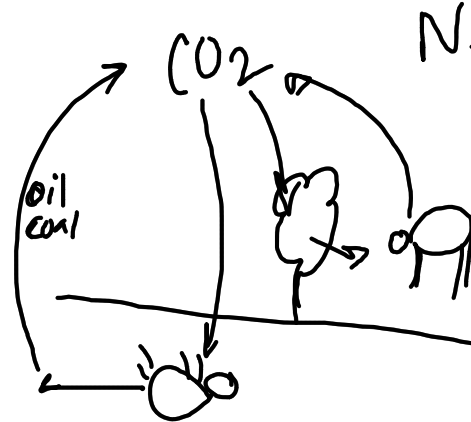
Biogeochemical Cycles

* - C/O

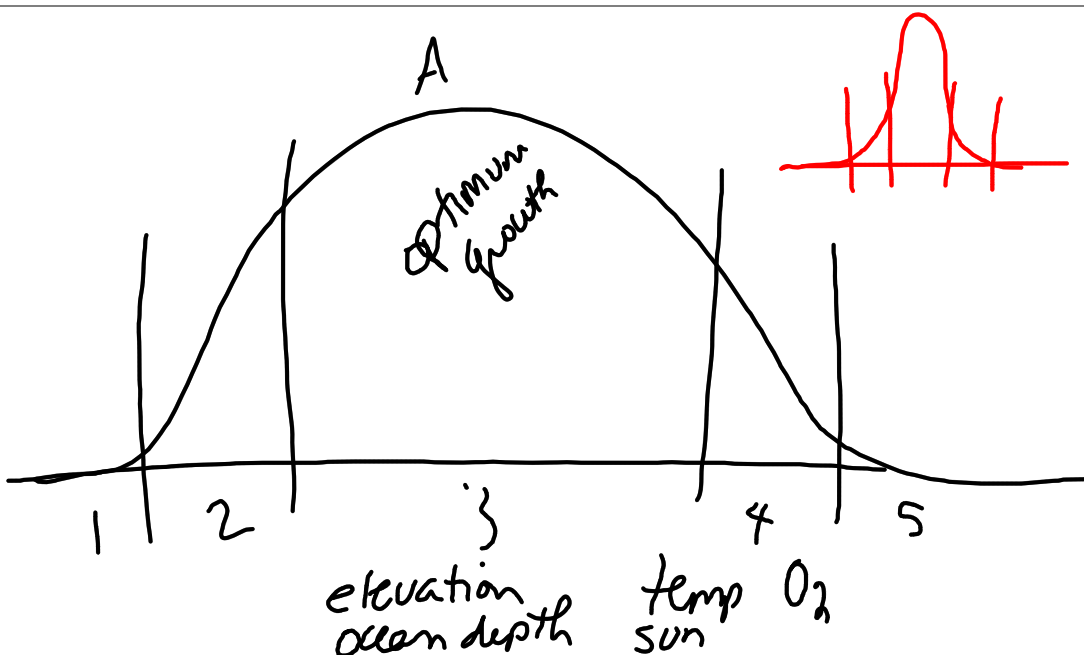
* - Nitrogen - nitrogen fixation - make usable

- H₂O

- P



Oct 31-1:38 PM



Oct 31-1:55 PM

limiting factor - something that limits a species #'s,
repro, movement

density dependent

Does depend on
✓ # of organisms

disease
competition (H₂O hole)
pred

density independent

Does NOT depend on
of organisms

weather
rain - flood, drought
fire

Oct 31-1:59 PM

1° Succession

Starts w/ rock

lava flow

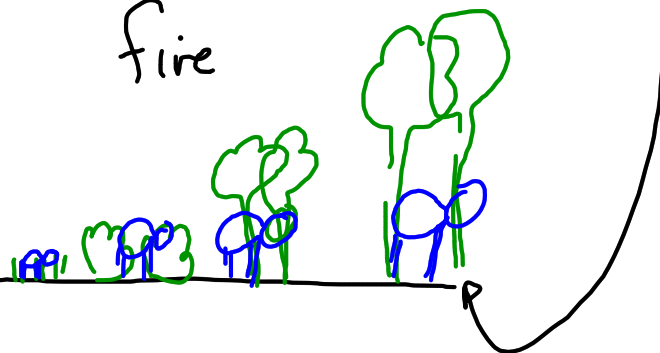
Pioneer
Species
lichen

2°

Starts w/ soil

fire

Climax Community



Oct 31-2:06 PM

K Strategy

live long
few offspring
take care of young

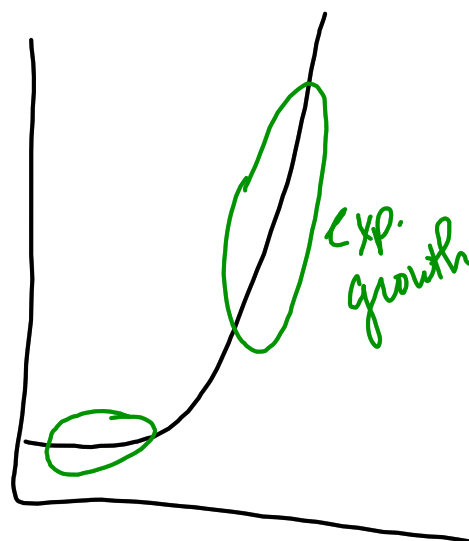
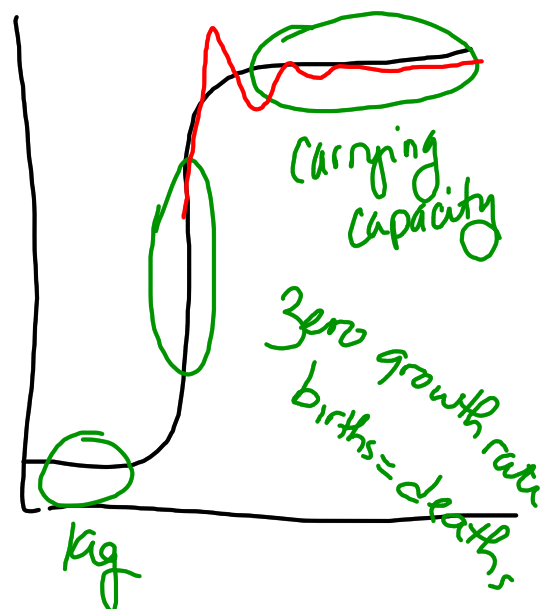
elephants
mammals

R Strategy

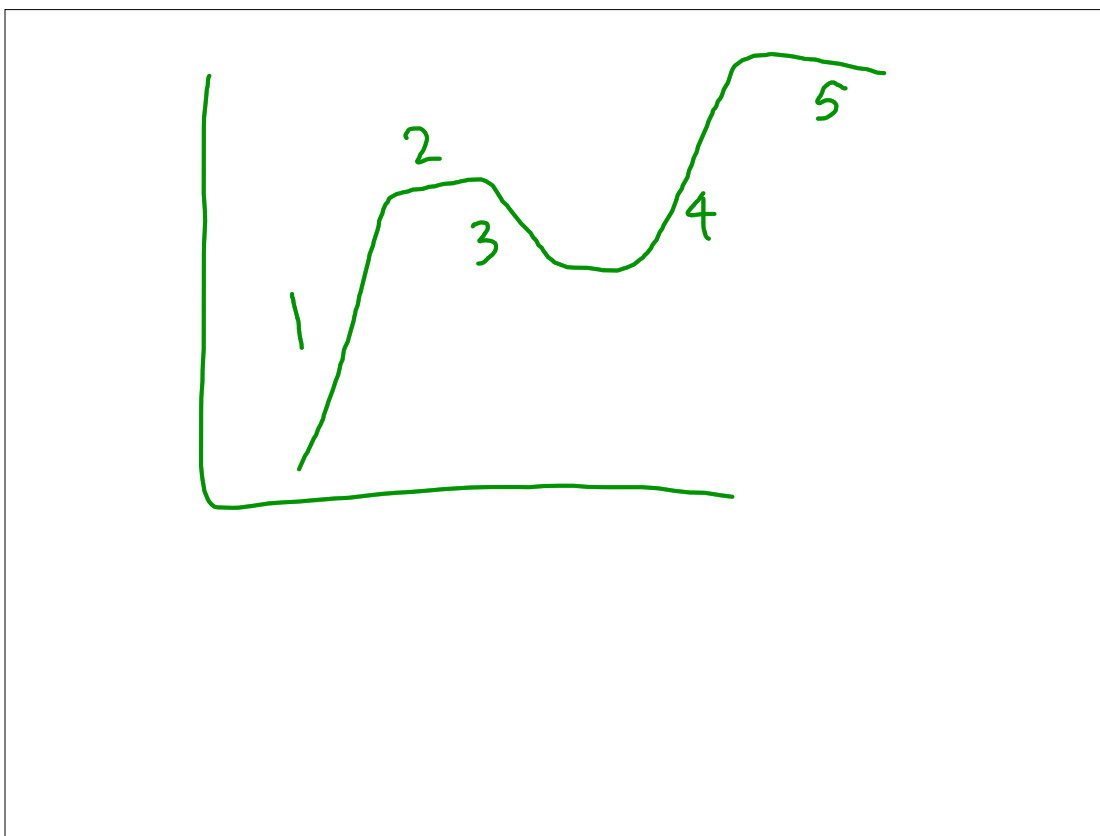
live short
lots offspring
adapt

mice
rats
bugs

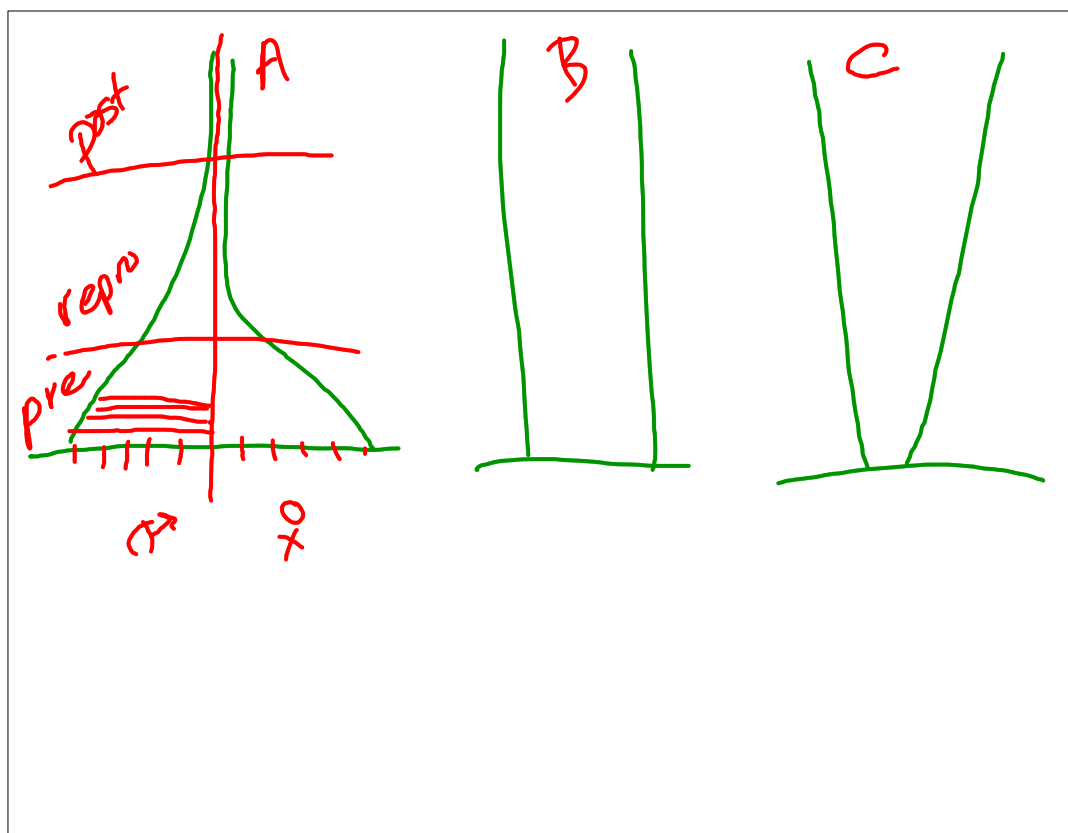
Oct 31-2:13 PM



Oct 31-2:16 PM



Oct 31-2:18 PM



Oct 31-2:20 PM