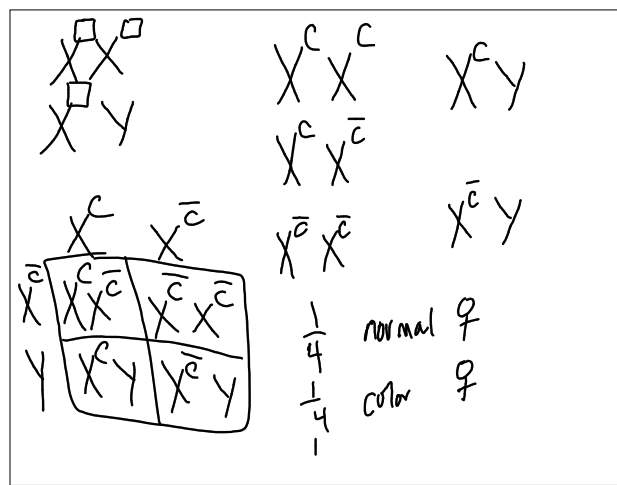
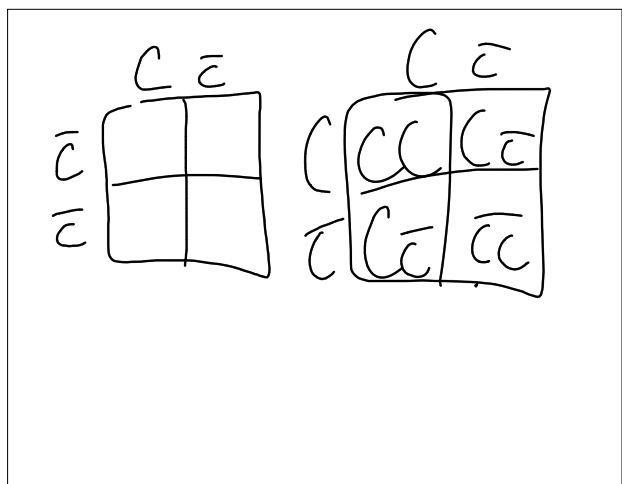


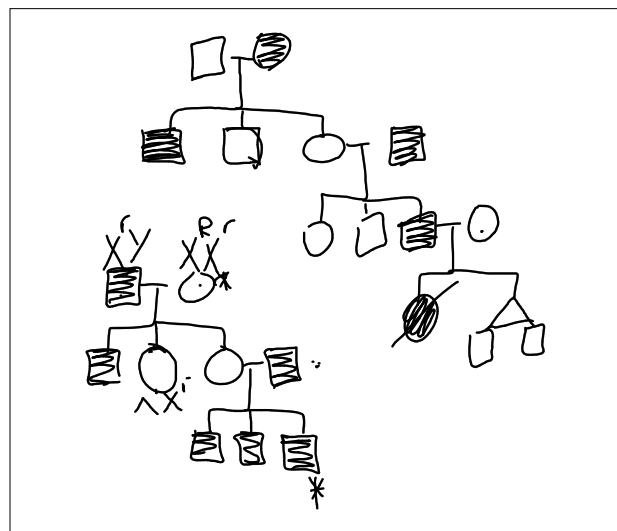
Mar 19-12:40 PM



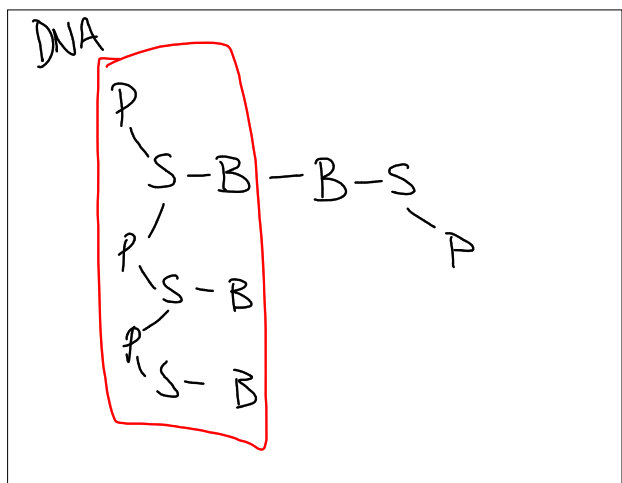
Mar 19-1:13 PM



Mar 19-1:17 PM



Mar 19-1:19 PM



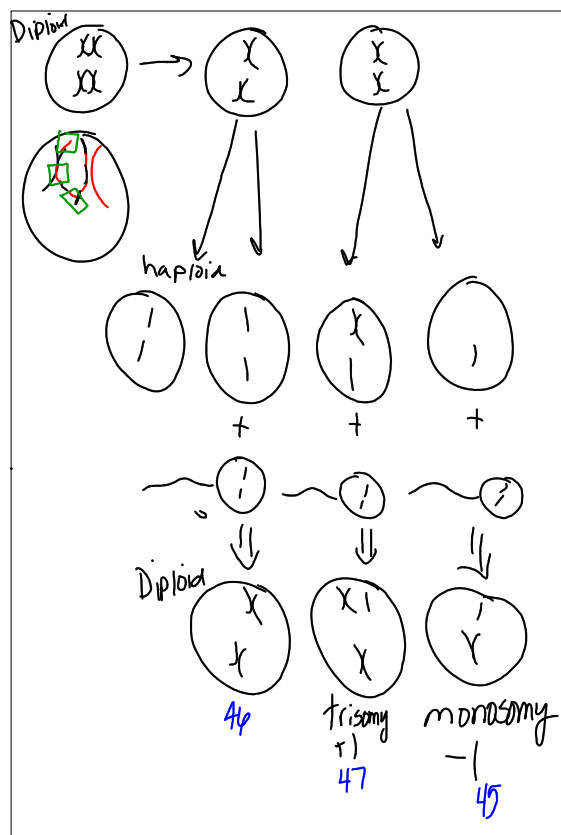
Mar 19-1:28 PM

* ATCGCTA
^CATGCTA - delete
 ATCCGCTA - A
 AT^GGCTA - pt.
 * ABCDEFG
 ABC^CDEFG - +
 AB^CDEFG - -
 AB^FEDG - Inversion
 ABC^XYZ^ZDEFG - trans

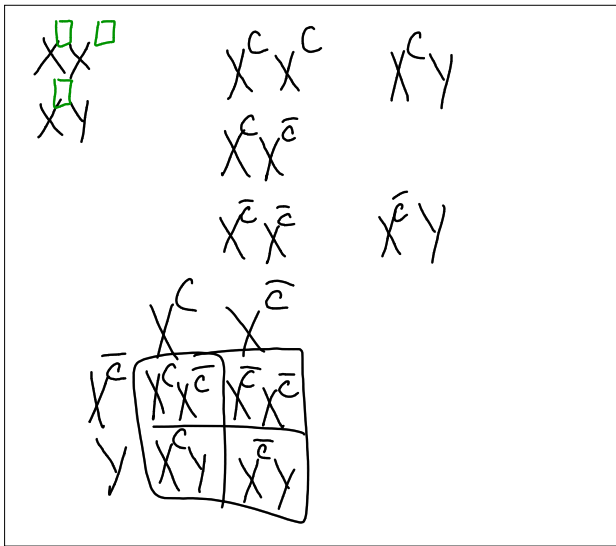
Mar 19-1:31 PM

A - AA, AO A - AB #1
 B - BB, BO A - O #2
 AB - AB
 O - OO

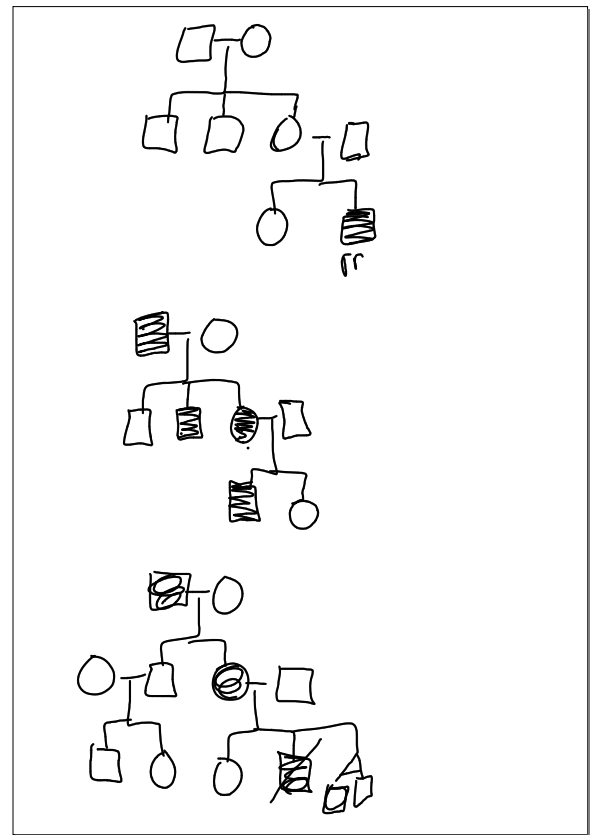
Mar 19-1:36 PM



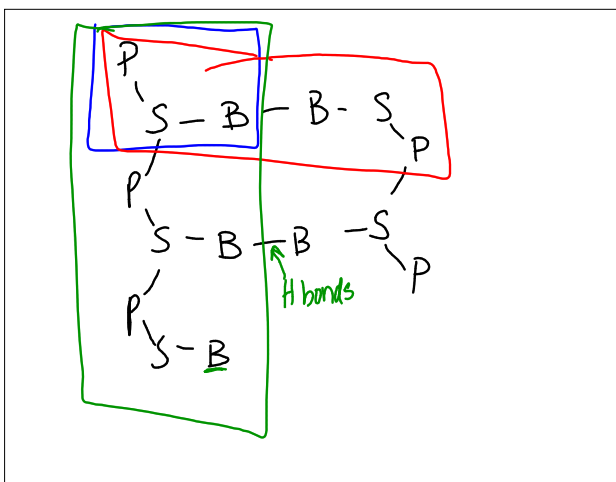
Mar 19-1:40 PM



Mar 19-2:02 PM



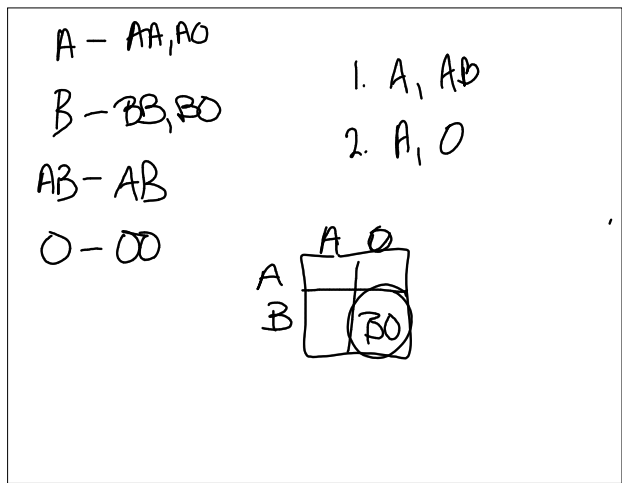
Mar 19-2:08 PM



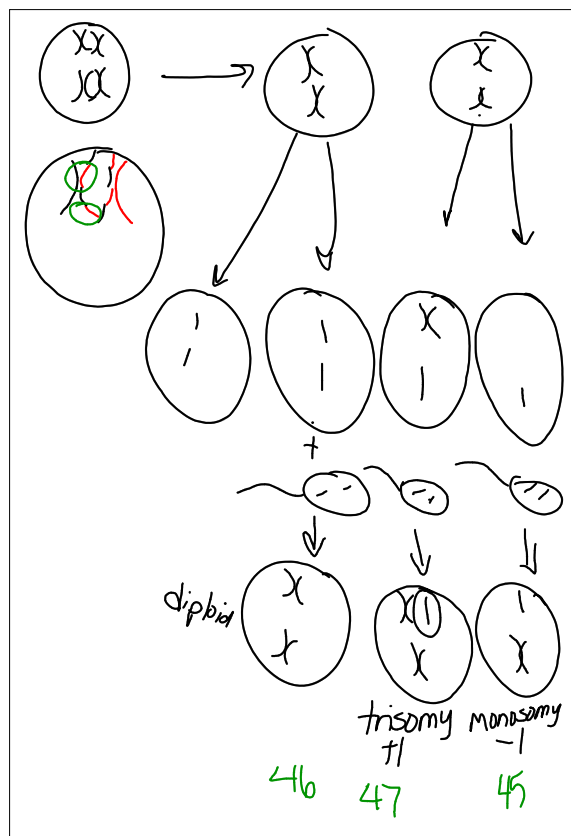
Mar 19-2:14 PM

*ATCCGAT
 AT^CGAT - deletion
 ATCCG^GAT - (+) frameshift
 ATC^GGAT - pt. mutation
 *ABCDEFGH
 ABCD^FFGH - (-)
 ABCD^EFGH - (+)
 ABCFEDGH - inversion
 ABCDXYZ^EFGH - translocation

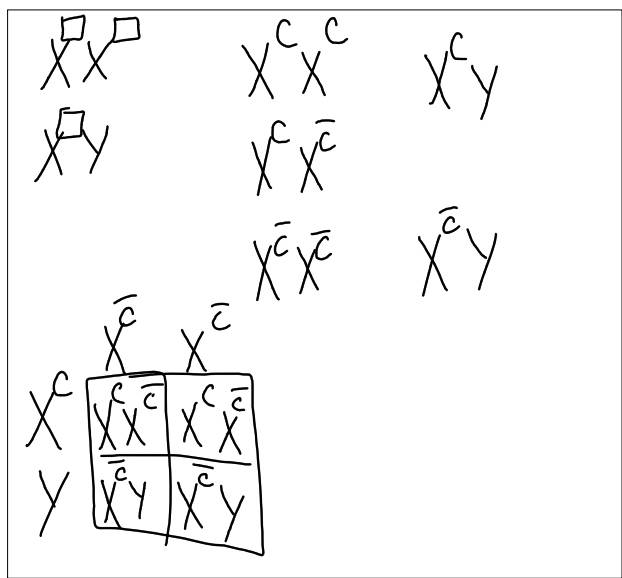
Mar 19-2:18 PM



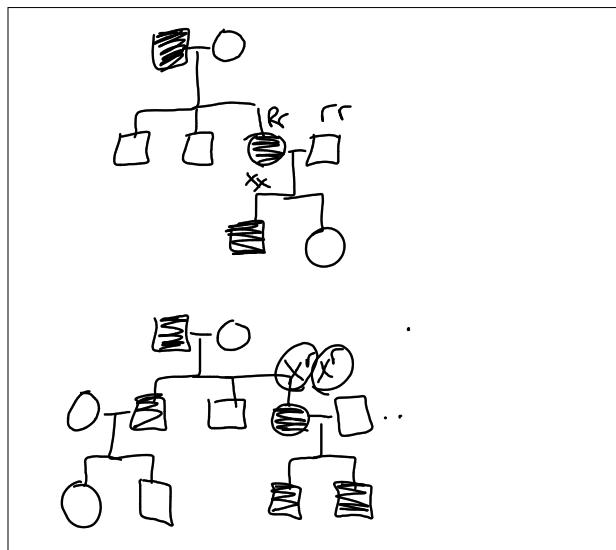
Mar 19-2:23 PM



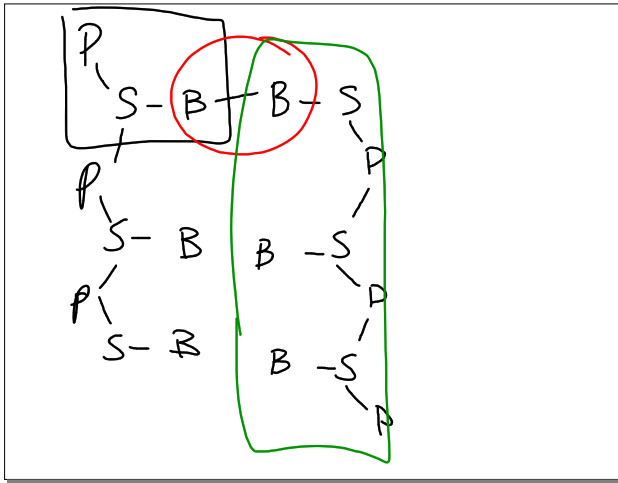
Mar 19-2:27 PM



Mar 19-2:45 PM



Mar 19-2:48 PM



Mar 19-2:54 PM

*ATCGGTA
 ATCG^GTA - deletion
 ATC^CGGTA - addition
 ATC^CGGTA - pt. mutation
 *ABCDEFGH
 ABC^EFGH - ⊖
 ABC^DEF^GH - ⊕
 ABC^FEDGH - inversion
 ABC^{DXYZ}EF^GH - translocation

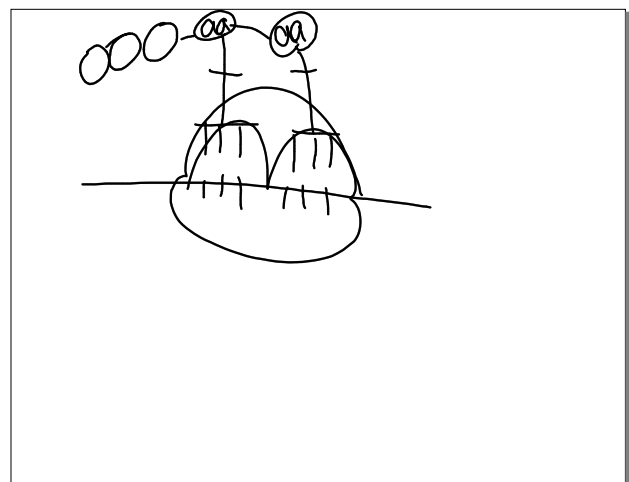
Frameshift

Mar 19-2:56 PM

A- AA, AO
 B- BB, BO
 AB- AB
 O- O

1. A, AB
 2. B, O

Mar 19-3:00 PM



Mar 19-3:08 PM